



medical schools outcomes database

MEDICAL SCHOOLS OUTCOMES DATABASE (MSOD) & LONGITUDINAL TRACKING PROJECT

2006 National Workshop



28th November – 1st December 2006
The Darlington Centre, Sydney



Australian Government
Department of Health and Ageing



CPMEC



KEYNOTE SPEAKERS

Mr Robert Wells

Menzies Centre for Health Policy, Australian National University (ANU)

Mr Robert Wells is Director of the Menzies Centre for Health Policy and Executive Director of the College of Medicine and Health Sciences at The Australian National University, Canberra. He has a broad role to work across the ANU in the areas of health research and policy analysis.

Mr Wells managed the Commonwealth's health workforce programs from the early 1990s until he left the Department of Health and Ageing in June 2004. He chaired the Medical Training Review Panel and represented the Commonwealth on bodies such as the Australian Medical Workforce Advisory Committee (AMWAC), the Australian Health Workforce Officials Committee (AHWOC) and the Australian Medical Council (AMC). Mr Wells also chaired a number of workforce committees established under the auspices of the Australian Health Ministers Council, including working parties on national medical registration and specialist medical training. He oversaw the implementation of major Commonwealth workforce initiatives including the 'Provider Number' arrangements, the establishment of a national network of rural clinical schools, establishment of national arrangements for prevocational medical training, reforms to specialist training arrangements and assessment of international medical graduates. Mr Wells has represented Australia internationally on medical workforce matters.

Professor Andrew Coats

MA DM (Oxon), MB BChir (Cantab), DSc, FRCP, FRACP, FACC, FESC, FSC, FAHA, FCSANZ, MBA (London Business School), GAICD

Professor Andrew Coats is Co-Convenor of the MSOD Project's Management Committee and has recently been appointed Deputy Vice Chancellor (Community) at The University of Sydney. Professor Coats is the erstwhile Dean of the Faculty of Medicine at the University of Sydney. Prior to his appointment as Dean of the Faculty of Medicine at the University of Sydney, Professor Coats was Viscount Royston Professor of Cardiology, National Heart and Lung Institute, Imperial College School of Medicine, London, UK and Associate Medical Director, Royal Brompton and Harefield NHS Trust, London, UK.

Prof Coats trained as an undergraduate in medicine at Oxford (preclinical) and Cambridge (clinical years) before completing his general medical and cardiological training in Melbourne, Australia. He returned to the UK to undertake research under the supervision of Peter Sleight and James Conway in Oxford where he continued his interests in hypertension, heart failure and cardiovascular physiology.

Since February 1999 he has been Editor-in-Chief of the International Journal of Cardiology. He has more than 1,200 publications in the fields of heart failure and hypertension including over 450 peer reviewed journal papers and has been chairman or Steering Committee member of the following major morbidity/mortality trials: EXIST, REPLACE, SENIORS, CHARM, OVERTURE, COPERNICUS, OPTIMAAL, and CHRISTMAS.

Prof Coats has trained in business management with an MBA from London Business School. His interests have been in strategic transformations, organisational behaviour and managing change. He led a review of NHS research into London regions and has led a group in research governance analysis.

INVITED SPEAKERS

MSOD & Longitudinal Tracking Project:

Background & Progress to Date

Professor Justin Beilby

Professor Justin Beilby is Executive Dean of the Faculty of Health Sciences at The University of Adelaide and Co-convenor of the MSOD Project's Management Committee. Professor Beilby has worked extensively with the National Health Medical Research Council, Commonwealth and State Governments and general practices and divisions of general practice, in research, strategic and workforce planning. Professor Beilby is a member of the Clinical Senate for South Australian Department of Health and has been Chair of the National Evaluation Committee of the National Prescribing Service. In his previous role as Associate Dean (Rural) for the Faculty of Health Sciences at The University of Adelaide, he has overseen the establishment of the very successful rural medical student educational programs. He is still in active general practice.

Australian Government Perspective

Professor Rick McLean

Professor Rick McLean is Principal Medical Advisor in Medical Education and Workforce with the Australian Government Department of Health and Ageing in Canberra. He has occupied this position since February 2006.

Previously, he was Associate Dean of the School of Rural Health of the University of Sydney in Dubbo, NSW from July 2001. Before joining the ranks of academia, he trained through the Royal Australasian College of Physicians and then worked from 1985 as a consultant physician in nuclear medicine, with periods of practice in public hospitals (St. George Hospital and Nepean Hospital), in private practice in the south and west of Sydney and in Wollongong, and briefly in the corporate world.

Currently he is President of the Adult Medicine Division of the Royal Australasian College of Physicians having held various roles in a range of training committees since 1990, including as Chief Censor. He has also held roles in committees involved with rural health, workforce, and e-health. During his time in Dubbo, he chaired the Rural Specialists Group of Rural Doctors Association of Australia.

For relaxation he flies a Piper Twin Comanche and plays golf badly.

MSOD National Data: Key Findings and Research

Professor David Prideaux and Professor John Humphreys

Professor David Prideaux is Professor and Head of the Department of Medical Education at Flinders University. He is an educator by background with expertise in curriculum development and evaluation. His roles include curriculum design and evaluation and staff development. He has undertaken consultancies in the development and change of medical school programs nationally and internationally. Professor Prideaux's research interests include decision-making models for change and innovation in medical education and the career and workforce outcomes of medical school programs. He has published widely his field study and is a Deputy Editor of the International journal, Medical Education. He is the holder of the 2004 ANZAME Award for excellence in medical education.

Professor John Humphreys is Professor of Rural Health Research in the Faculty of Medicine, Nursing and Health Sciences at Monash University. Prof Humphreys is well known for his academic research on health service provision in rural and remote areas of Australia, a field in which he has published widely in both journals and books. He has undertaken extensive fieldwork on rural health issues in north-west Queensland, the Wimmera-Mallee region of Victoria, and the Orana and Far West region of New South Wales. His research interests focus on rural communities, health service provision in rural and remote areas of Australia, rural workforce recruitment and retention, rural health policy and the evaluation of rural health programs. In addition to his academic career, Prof Humphreys has worked in the Victorian Health Commission and the Commonwealth Department of Health and Human Services in Canberra where he took a lead role in developing the first *National Rural Health Strategy 1994* and later the *National Rural Health Strategy Update 1996*. In 1999 he was a facilitator and a member of the Implementation Committee for the *Regional Australia Summit* auspiced by the Deputy Prime Minister and the Department of Transport and Regional Services at Parliament House Canberra. He has reviewed several national rural health programs, including the Rural Undergraduate Support and Co-ordination program in Australian Medical Schools. Prof Humphreys has been a member of numerous reference groups and is currently a member of several Advisory Committees for the Australian Department of Health and Ageing.

Both Professors Prideaux and Humphreys are members of the MSOD Project's Management Committee. They have led the MSOD project since its first inception in 2001 as part of the DHA/CDAMS Joint RCS Evaluation Working Group. In that time, they have contributed many unpaid and often unacknowledged hours to progressing this project. The success of the project to date is largely due to both Professors Prideaux's and Humphrey's vision, expertise, and talented leadership.

Challenges of a Longitudinal Tracking Study

Dr Anne Young

The Australian Longitudinal Study on Women's Health - widely known as Women's Health Australia - is a longitudinal population-based survey, examining the health of over 40,000 Australian women over a 20 year period. It was first funded in 1995 and is Australia's longest running longitudinal study. Women's Health Australia is a national research resource providing information on women's health issues. It provides an evidence base to the Australian Government Department of Health and Ageing for the development and evaluation of policy and practice in many areas of service delivery that affect women. The project is the largest of its kind ever conducted in Australia and it is gaining an international reputation for its multidisciplinary methodology. Dr Anne Young is the project's statistician and her research interests include longitudinal data analyses, record linkage and issues of access and equity in health service utilisation.

Longitudinal studies enable changes in the social and behavioural aspects of people's lives to be tracked, as well as showing the development over time of factors and outcomes of interest. Examples of the challenges and rewards of collecting and analysing longitudinal data will be discussed, in the context of both the ALSWH and the MSOD Project.

Collaborative Research Projects – Case Study:

The Influence of Personal Characteristics, Dispositional and Environmental Factors in Determining the Practice Choices and Well-being of Australian Medical Students – A Feasibility Study.

Professor Judy Searle and Dr Mary Rogers

Professor Judy Searle is Dean and Head of the School of Medicine at Griffith University. Professor Searle is also a member of the MSOD Project's Research Advisory Committee. Professor Searle's background is as a medical educationalist and obstetrician and she joined Griffith in February 2004 as the Foundation Dean and Head of the Griffith School of Medicine. Her previous role was as Associate Dean of the Peninsula Medical School in the UK, where she helped

establish one of the first new medical schools in that country in 30 years. Prior to that appointment, Professor Searle was a Senior Lecturer in Obstetrics and Gynaecology at Flinders University in South Australia. Professor Searle's research interests are broad in both clinical medicine and medical education. She has recently studied interventions to increase access of under-represented groups into medicine programs, particularly those disadvantaged from socio-economic and geographic factors. Appointed as the first woman Dean of a School of Medicine in Australia and the UK, Professor Searle has established two new medical schools, one in Australia and one in the UK. She is currently assisting the Chief Health Officer of Queensland Health with Ministerials, Coroner reports, quality reviews and medical education. She has also been appointed Chair of the Queensland Maternal and Perinatal Quality Council and to a number of national committees and working parties in medical education.

Dr. Rogers is a Research Fellow in the School of Medicine at Griffith University. Dr Rogers has published in the area of career development and personality and has worked as a lecturer and tutor for the School of Psychology, Griffith University. Her professional experience includes working as an Organisational Psychologist focusing on recruitment and selection.

Professor Searle and Dr Rogers are working on a national longitudinal research project investigating factors influencing the career choices of Australian medical students. The project brings together several areas of research (career choice, medical education, personality, values, well-being and contextual influences) to study the determinants of practice choices such as specialty, location and lifestyle. Part of this study which involves surveying first year medical students is an approved sub-study of the MSOD. The survey is linked with the MSOD questionnaire and the national database.

THEMES & DISCUSSION TOPICS

The three main overarching themes for the workshop are:

- Research potentials of the MSOD;
- Developing the national database and data collection processes;
- Longitudinal tracking.

There will be six discussion topics (listed in the agenda enclosed) and a complete list of the questions will be available at the workshop.

WORKSHOP DINNER

Date: Thursday, 30th September 2007

Time: 6.30pm-11pm

Venue: Bondi Trattoria

38 Campbell Parade, Bondi Beach

Dress: Smart casual (or whatever takes your fancy)

Perched on the southern end of Bondi Beach, Bondi Trattoria is a restaurant with fabulous views and offers Sydney's unique dining experience. Chef Andy Davies' cuisine is a fusion of Italian and modern Australian and is made with the freshest produce, attention to detail and originality, offering beautifully simple yet distinctively Italian fare.

Sit back, unwind and take in the breathtaking panoramic views of Sydney's iconic Bondi Beach, while you enjoy an exceptional menu designed for the MSOD workshop delegates. Drinks will be served on arrival at 6.30pm, followed by entrée, main course, dessert, coffee and tea. Buses to Bondi Beach will depart from the Darlington Centre at 6pm and will return at 10.30pm.

PROGRAM

THE DARLINGTON CENTRE

DAY 1

Thursday 30th November 2006

Time	Presentation	Presenter/ Chair/ Facilitator	Venue
8.30am – 9am	Registration Coffee/ Tea on arrival.	Registration Desk	Foyer outside Conference Lounge
9am	Welcome & Official Opening	Presenter: Professor Lindon Wing Chair CDAMS Dean, School of Medicine Flinders University	Conference Room
9.15am	Keynote Address	Presenter: Mr Robert Wells Director of Menzies Centre for Health Policy, Australian National University	Conference Room
9.30am	Keynote Address	Presenter: Professor Andrew Coats Deputy Vice Chancellor (Community), The University of Sydney and Co-Convenor, Medical Schools Outcomes Database & Longitudinal Tracking Project	Conference Room
9.45am	Medical Schools Outcomes Database & Longitudinal Tracking Project: Background & Progress to Date	Presenter: Professor Justin Beilby Co-Convenor, Medical Schools Outcomes Database & Longitudinal Tracking Project	Conference Room
10am	Department of Health & Ageing	Presenter: Professor Rick McLean Principal Medical Adviser, Medical Education Training and Workforce, Department of Health & Ageing	Conference Room
10.15am	Questions to Speakers and Discussion	Chair: Professor Lindon Wing Chair CDAMS Dean, School of Medicine Flinders University	Conference Room
10.45am	Morning Tea		Conference Lounge
11.15am	MSOD National Data: Key Findings & Research Possibilities	Presenters: Professor David Prideaux & Professor John Humphreys MSOD Management Committee	Conference Room
11.45am	Open Discussion	Chairs: Professor David Prideaux & Professor John Humphreys	Conference Room
12.30pm	Lunch		Conference Lounge
1.30pm	Discussion Workshops Group 1 & 2: Research Questions that the National Database Can Answer. Group 3 & 4: Outputs from the Database: What sort of reporting do we want from the database? Groups 5 & 6: Sustainability/ Long Term Data Management: Keeping in touch with students.	Facilitators: TBA TBA TBA	Meeting Room Nos: TBA Meeting Room Nos: TBA Meeting Room Nos: TBA
3pm	Afternoon Tea		
3.30pm	Plenary Session: MSOD – A National Process and Resource Presentations from Discussion Groups	Chair: Professor Neville Yeomans MSOD Research Advisory Committee Foundation Dean of Medicine University of Western Sydney	Conference Room
5pm	End Day 1		
7pm	Workshop Dinner	Buses will depart the Darlington Centre at 6pm and return from Bondi Beach at 10.30pm.	Bondi Trattoria 34 Campbell Parade Bondi Beach

PROGRAM

THE DARLINGTON CENTRE

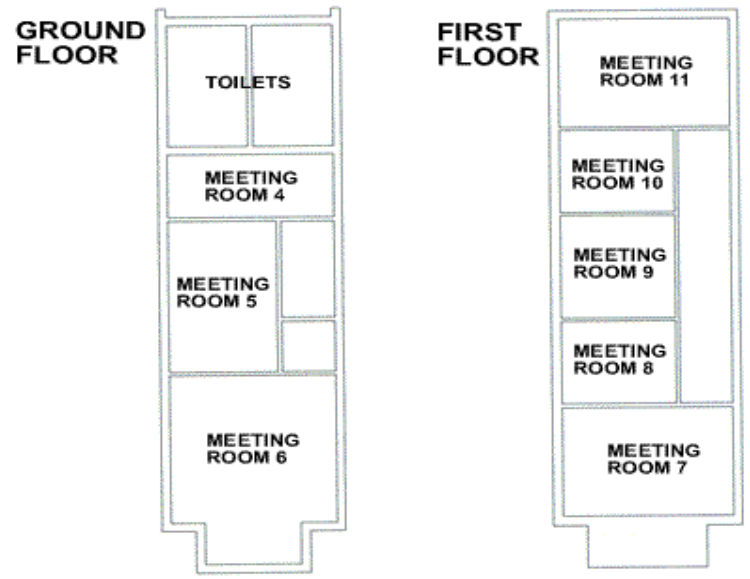
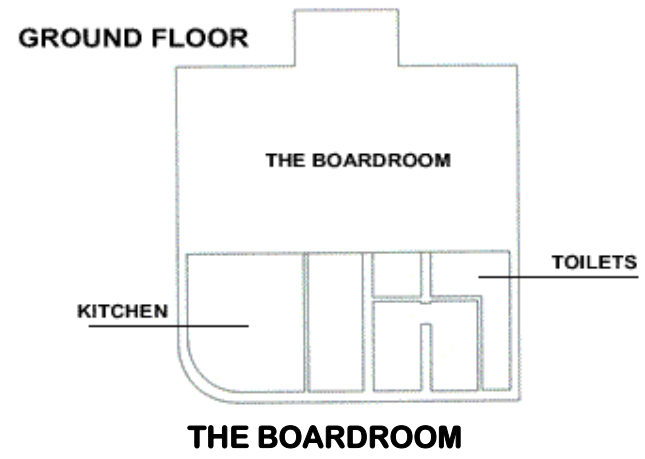
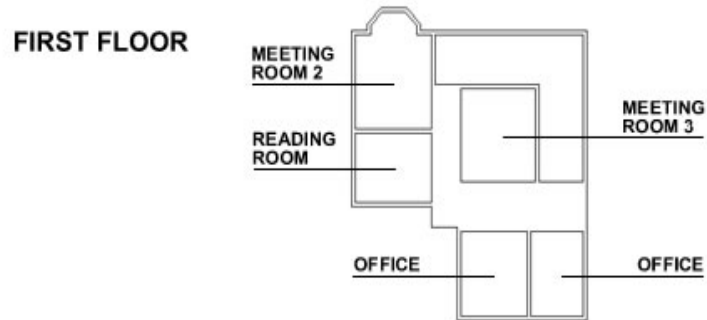
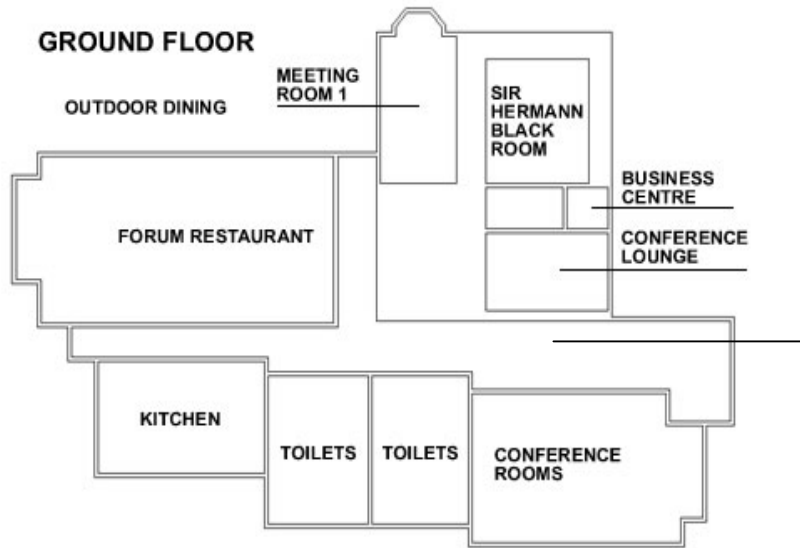
DAY 2

Friday 1st December 2006

Time	Presentation	Presenter/ Chair/ Facilitator	Venue
7.30am-8.30am	<i>Breakfast Meeting New Zealand Medical Schools</i>	New Zealand delegates and MSOD Management Committee members only.	Darlington Centre Meeting Room 1
9am	Challenges of a Longitudinal Tracking Study	Presenter: Dr Anne Young Senior Research Academic/Statistician The Australian Longitudinal Study on Women's Health	Conference Room
9.30am	Collaborative Research Projects – Case Study: The Influence of Personal Characteristics, Dispositional and Environmental Factors in Determining the Practice Choices and Well-being of Australian Medical Students – A Feasibility Study.	Presenters: Professor Judy Searle & Dr Mary Rogers Dean and Head, School of Medicine Research Fellow, School of Medicine Griffith University	Conference Room
10am	Discussion Workshops Group 1 & 2: Research Questions Relating to Local and Oligocentric Studies. Group 3 & 4: Possibilities & Improvements: Ways to improve data collection – online vs paper based questionnaires; medical schools data collection; etc Groups 5 & 6: Long Term Outcomes: Quantitative & Qualitative- What Should We Collect	Facilitators: TBA TBA TBA	Meeting Room Nos: TBA Meeting Room Nos: TBA Meeting Room Nos: TBA
11am	Morning Tea		Conference Lounge
11.30am	Plenary Session: Where To From Here? Presentations from Discussion Groups	Chair: Professor Judy Searle MSOD Research Advisory Committee Dean, School of Medicine Griffith University	Conference Room
12.30pm	Lunch		Conference Lounge
1.30pm	End Day 2/ Workshop Concludes		
2pm – 4.30pm	<i>Second MSOD Stakeholder Advisory Committee face-to-face meeting.</i>	MSOD Management Committee and Stakeholder Advisory Committee members only.	The Boardroom

VENUE MAP: THE DARLINGTON CENTRE

← CITY ROAD →



THE SCHOOL BUILDING